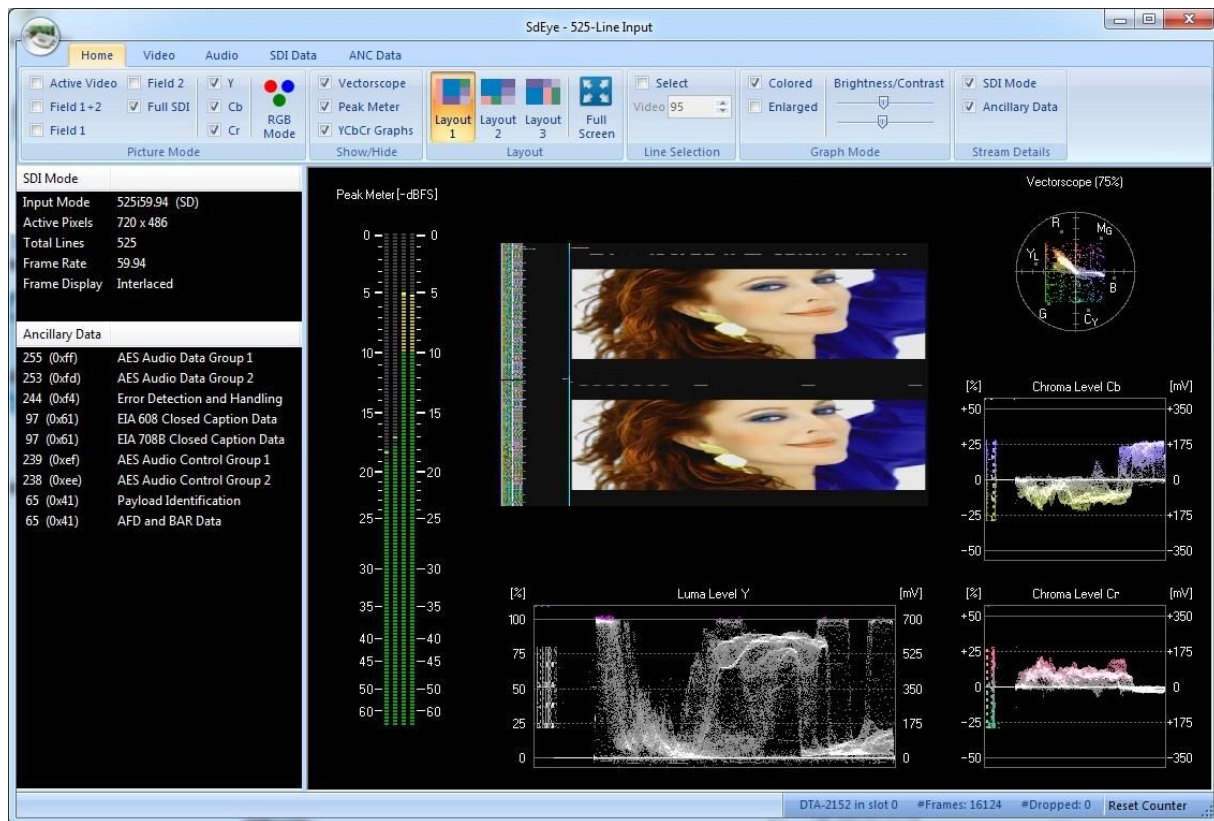


## SD/HD/3G-SDI Analysis & Monitoring Software

- ❑ YCbCr/RGB waveforms and vectorscope
- ❑ SDI structure and audio peak meter
- ❑ HANC and VANC display



- Cost-effective real-time visual analyser for SD/HD/3G-SDI signals
- Displays pictures, YCbCr/RGB waveforms, vectorscope and peak meter
- Decodes HANC and VANC streams
- Real-time raw SDI data display
- Luminance/chrominance threshold settings for showing out-of-range pixel values
- Peak meter for all 16 audio channels
- EIA 608/708 Closed Caption analysis
- Offline .dtsdi file analysis
- SDI stream monitoring output
- CRC and EDH error detection
- Data logging to CSV file
- Audible audio using PC speaker output

### SUPPORTED INPUT ADAPTERS

Bus	Standard	Supported Adapters
PCI	SD-SDI	DTA-124, 145, 160
PCIe	SD-SDI	DTA-2144, 2145, 2152, 2154, 2160, 2174
	HD-SDI	DTA-2152, 2154, 2174
	3G-SDI	DTA-2174
USB-2	SD-SDI	DTU-225, 245
USB-3	HD-SDI	DTU-351

### ORDERING INFORMATION

Type	Description
DTC-335-SY	SdEye SD/HD-SDI Analysis & Monitoring software

Please refer to [www.dektec.com](http://www.dektec.com) for the latest pricing and a list of distributors and resellers.