

Application Note

License programming

1. Introduction

Many of DekTec application and hardware features require the presence of a license. If these applications/functions were ordered simultaneously with DekTec hardware, the licenses will typically have been pre-programmed on the hardware and the applications/hardware features are ready for use out of the box. In cases where the licenses have not been pre-programmed on the DekTec hardware (e.g. when you ordered an additional license at a later stage) you will receive a .dtlic file (=DekTec License File) and you will need to program the license(s) in the .dtlic on the DekTec hardware. In the remainder of this application note we will discuss how to program the licenses.

2. Programming a license

To program a license on your hardware you will need to have the latest version (V2.0.1.54 or higher) of the DtlInfo¹ tool. The steps below describe how to use the DtlInfo tool to add the licenses to your card.

Step 1 - Install DtlInfo

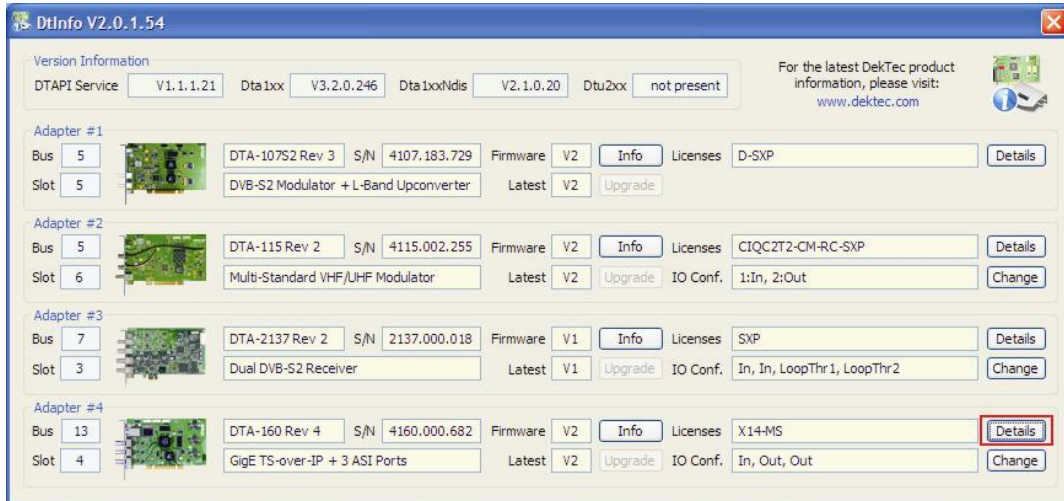
NOTE: If you already have the latest version of DtlInfo installed you can skip this step and continue to step 2;

- Download the latest version of DtlInfo from the DekTec website:
<http://www.dektec.com/Products/Apps/DtlInfo/Downloads/DtlInfo.zip>;
- Execute the installer in the zip and follow the instruction in the installer;
- Continue to Step 2;

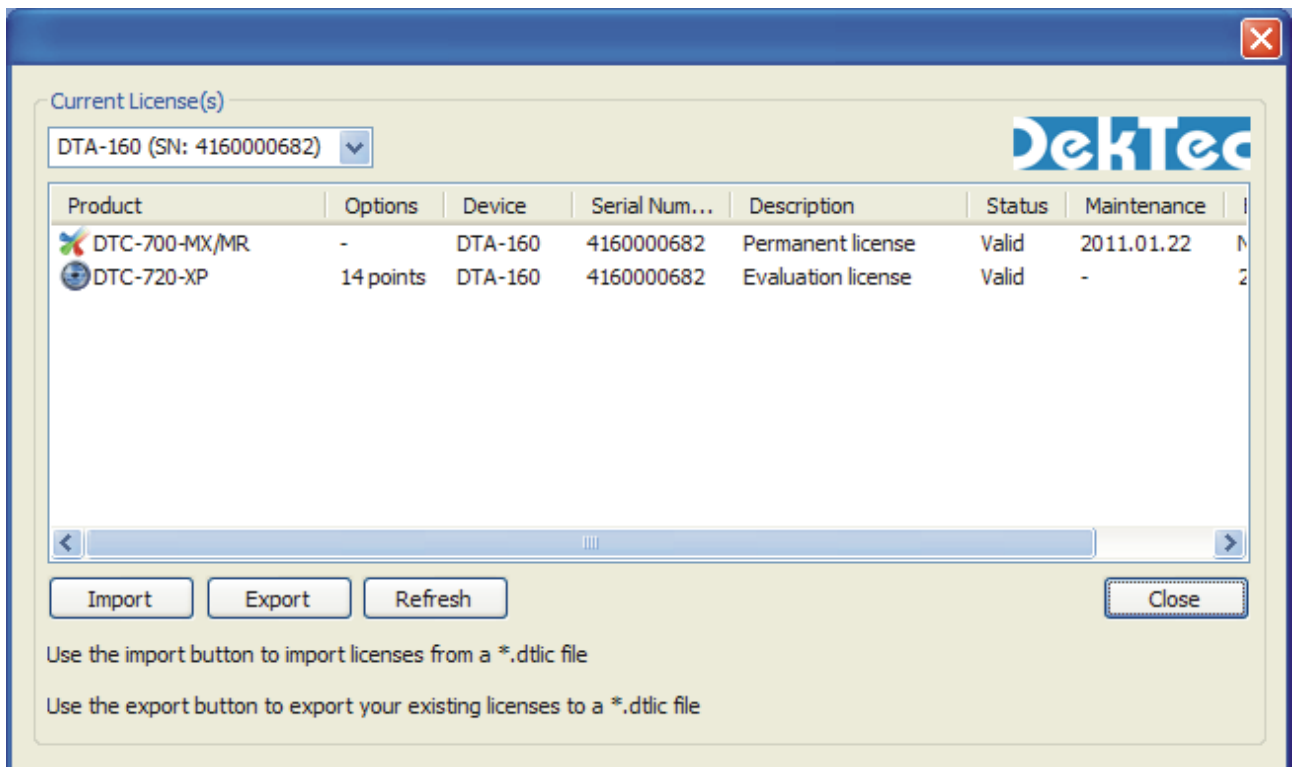
¹ The DtlInfo tool is a free utility which can be used to get information about the DekTec cards in your PC, upgrade the firmware of cards, check which licenses are available and add new licenses to a card.

Step 2 - Open license manager window

- Start DtInfo;
- Click on the details button next to the licenses edit box, for the DekTec hardware to which a license should be added;



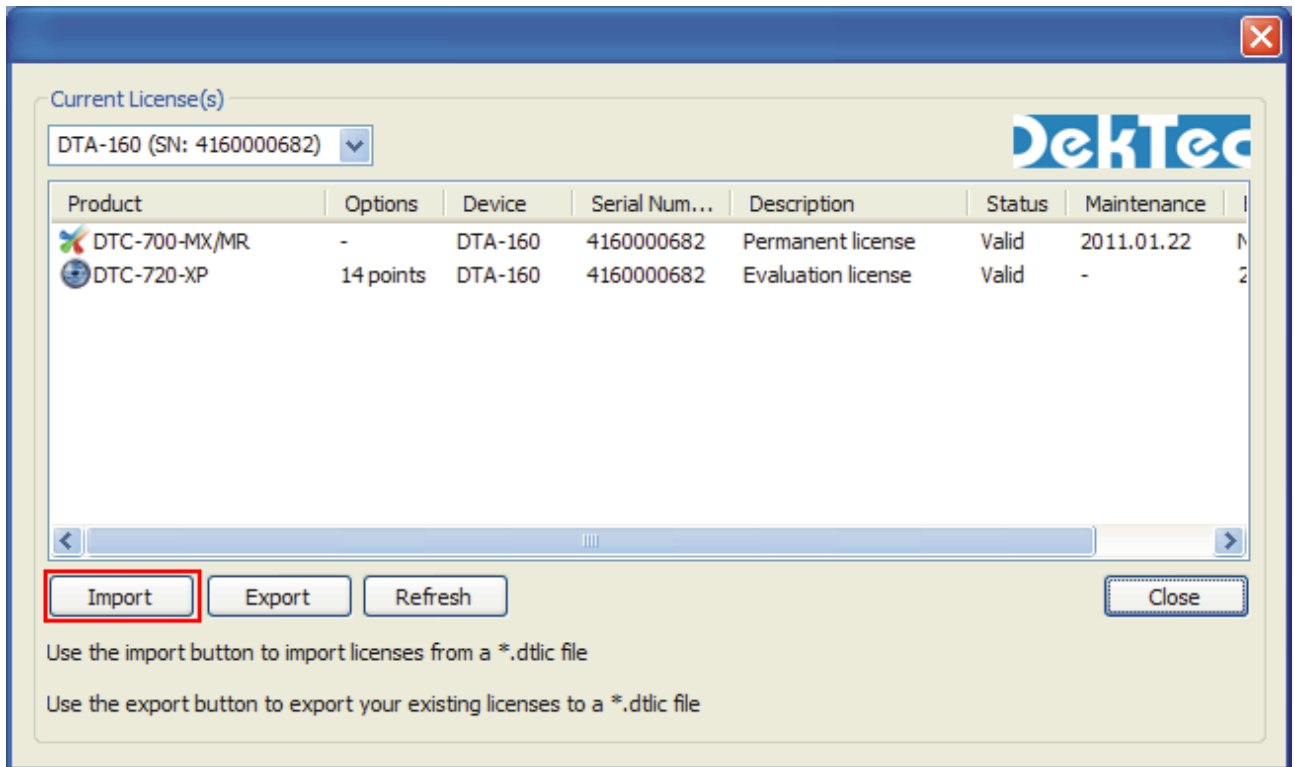
- The license manager window will popup and it will show the details for the licenses already present on selected card;



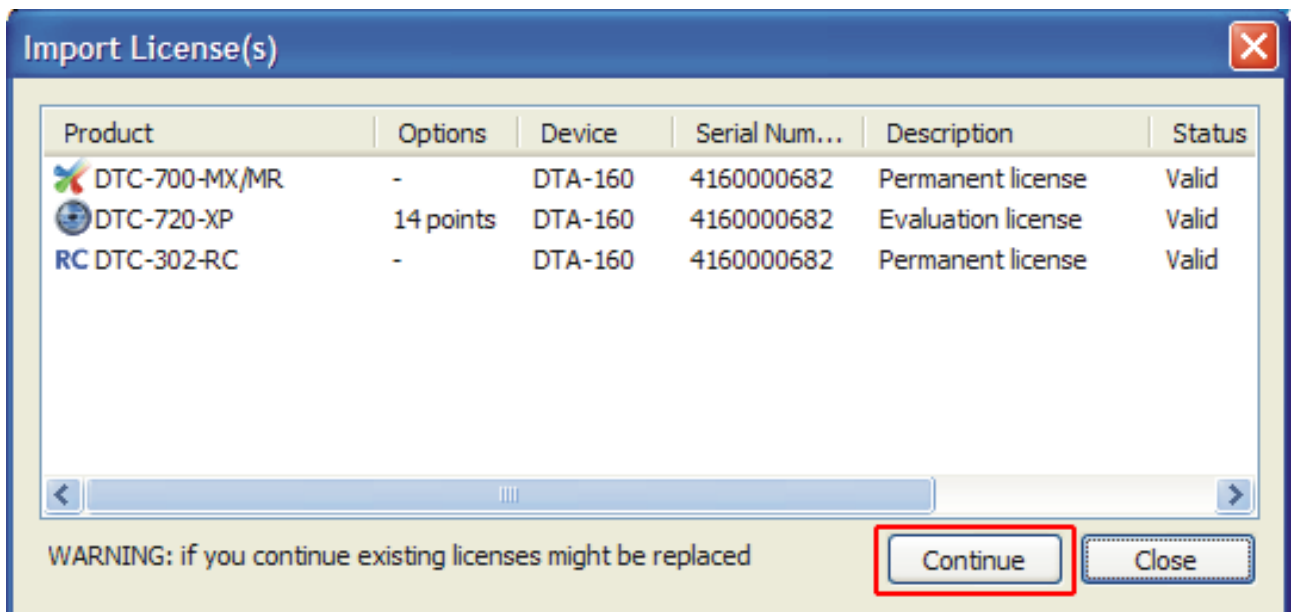
- Continue to Step 3

Step 3 – Import licenses from the .dtlic file

- Click on the import button.



- An open file dialog will popup and you should now browse to the .dtlic file you received;
- After selecting your file an import window will now show up and it will list the all licenses included in the .dtlic file. Normally this list should include the license already present on your card + the new license(s) you ordered.
- Click on the continue button.



- If all is OK you should see “Licenses programmed successfully” message shortly after pressing the continue button. NOTE: in case any licenses will be removed during the import process you may first get a warning message with a list of licenses that will be removed. If you feel that the listed licenses should not be removed you can cancel the import at this point and you should refer to the trouble shooting section of this document. Otherwise allow the import to continue.
- Import has now been completed and the license(s) should have been added to you hardware. NOTE: you can discard the .dtlic file now. The licenses have been added permanently to your hardware.

3. Trouble shooting

If you encounter any problem with applying your licenses then please send an email to the DekTec support email address (<mailto:info@dektec.com>) with a description of your problem. Please include the following details in your email:

1. A screenshot taken from the main DtInfo window;
2. An exported .dtlic file with the current licenses on your hardware. To create a .dtlic file with the current licenses on your hardware open the license manager and press the Export button.

